

I Suomenlahti – Finska viken – Gulf of Finland***541.****18, 191, 952****A,B/626/626_1****A,B GENERAL/INDEX**

Suomi. Helsinki. Länsisatama. Länsisataman väylä (10.8 m). Länsisataman laiturin väylä (8.9 m). Lokkiluoto-Saukonnokka väylä (8.9 m). Väylälinjauksen muutokset. Uusi väyläalue. Väyläalueen muutos. Turvalaitemuutokset. Kartta-merkinnän muutos.

Finland. Helsingfors. Västra Hamnen. Farleden till Västra hamnen (10.8 m). Farleden till kajen i Västra hamnen (8.9 m). Farleden Måshällen–Utterudden (8.9 m). Ändrad farledsdragning. Nytt farledsområde. Ändrat farledsområde. Ändrad utprickning. Ändrad kartmarkering.

Finland. Helsinki. West harbour. West harbour channel (10.8 m). The channel to the West Harbour quay (8.9 m). Lokkiluoto–Saukonnokka channel (8.9 m). Amended channel alignment. New fairway area. Amended fairway area. Amended buoyage. Amend chart.

Ref: TM/UfS/NtM 22-23/451/2011(T), 20-21/422/2011, 3-4/44/2011, 2/28/2011, 2/26/2011

I. Väylälinjauksen muutokset - Ändrad farledsdragning - Amended channel alignment

A. Poistettu väylänosa – Indraget farledsavsnitt – Discontinued channel section (Länsisataman laiturin väylä – Farleden till kajen i Västra hamnen – Channel to the West Harbour quay 8.9 m).

Poista väylälinja seuraavien pisteiden väliltä – Stryk farledslinjen mellan följande punkter – Delete navigation line between the following positions:

	WGS 84		
1)	60°08.5610'N	24°54.3265'E	Alku/begynnelsep./starting point
2)	60 08.7975	24 54.6205	
3)	60 08.8814	24 55.0260	Loppu/ändpunkt/end point

B. Uusi väylänosa - Nytt farledsavsnitt - New channel section (8.9 m)

Lisää väylän keskilinja – Inför farledens mittlinje – Insert fairway centre line

	WGS 84		
1)	60°08.6084'N	24°54.3272'E	Alku/begynnelsep./starting point
2)	60 08.8134	24 54.9531	
3)	60 08.8814	24 55.0259	Loppu/ändpunkt/end point

II. Uusi väyläalue – Nytt farledsområde – New fairway area (Länsisataman laiturin väylä – Farleden till kajen i Västra hamnen -The channel to the West Harbour quay 8.9 m)

A. Uusi vasen reunalinja – Nyvänster begränsningslinje – New left channel edge line

	WGS 84		
1)	60°08.6587'N	24°54.5226'E	
2)	60 08.7624	24 54.7124	
3)	60 08.8216	24 54.9304	

B. Uusi oikea reunalinja – Nyhöger begränsningslinje – New right channel edge line

	WGS 84		
1)	60°08.5009'N	24°54.5005'E	
2)	60 08.6265	24 54.7545	
3)	60 08.7207	24 55.2032	

Uusi väyläalue on ruopattu. Poista alueella olleet matalat.

Det nya farledsområdet har muddrats. Stryk grunden i området.

The new fairway area has been dredged. Delete shoals in the area.

Lisää väyläalueen rasterointi - Inför rasterat farledsområde – Insert grey tint in fairway area

III. Väyläalueen muutos - Ändrat farledsområde - Fairway area amended (Lokkiluoto – Saukonnokka väylä - Farleden Måshällen – Utterudden - Lokkiluoto – Saukonnokka channel)

Vasen reunalinja – Vänstra begränsningslinjen – Left edge line

	WGS 84		
1)	60°08.7207'N	24°55.2032'E	
2)	60 08.8216	24 54.9304	

Poista vanha reunalinja – Stryk befintlig begränsningslinje – Delete former edge line

IV. Turvalaitemuutokset - Ändrad utprickning - Amended buoyage

A. Uudet valopojjut – Nya lysbojar – New lighted buoys

	Nr		WGS 84	
1)	76180	Pohj.-Nord-North	60°08.7207'N	24°55.2032'E
2)	76064	Oikea-SB-Starb	60 08.6736	24 54.9789
3)	76063	Oikea-SB-Starb	60 08.6265	24 54.7545
4)	76062	Oikea-SB-Starb	60 08.5009	24 54.5005

B. Poistetut valopojjut – Indragna lysbojar – Withdrawn light buoys

Poista – Stryk – Delete:

	Nr		WGS 84	
1)	75449	Oikea-SB-Starb	60°08.5696'N	24°54.5102'E
2)	75452	Oikea-SB-Starb	60 08.7168	24 54.9019
3)	13025	Vasen-BB-Port	60 08.7706	24 55.1161

C. Poistetut valaisemattomat viitat – Indragna obelysta prickar – Withdrawn unlighted spar buoys

Poista – Stryk – Delete:

	Nr		WGS 84	
1)	75453	Erikoismerkki - special- märke - Special mark	60°08.7658'N	24°55.0325'N
2)	75451	Erikoismerkki - special- märke - Special mark	60 08.6677	24 54.7713
3)	75450	Erikoismerkki - special- märke - Special mark	60 08.6187	24 54.6408
4)	12368	Vasen-BB-Port	60 08.6729	24 55.0542

D. Poistetut valoviitat - Indragna lysprickar – Discontinued lighted spar buoys

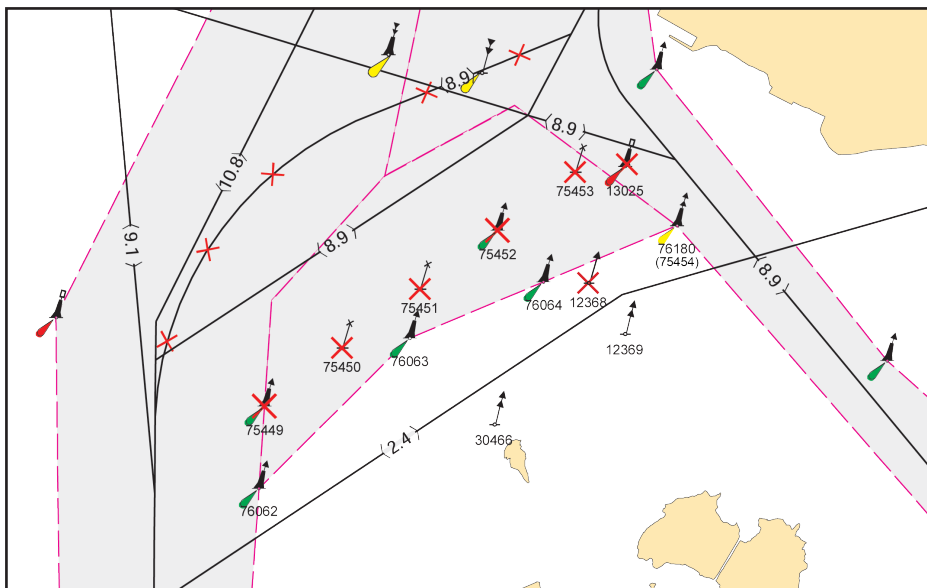
Poista – Stryk – Delete:

Nr		WGS 84	
75454	Pohj.-Nord-North	60°08.7220'N	24°55.2010'E

E. Vaihdetut viittojen lajit - Ändrad pricktyp - Amended spar buoy type.

Vaihda viittojen lajit – Ändra pricktyp – Amend type of spar buoy:

	Nr	WGS 84				
1)	30466	60°08.5545'N	Poista	Oikea	Lisää	Pohjois
		24°54.8955'E	Stryk	SB	Inför	Nord
			Delete	Starb.	Insert	North
2)	12369	60 08.6302	Poista	Oikea	Lisää	Pohjois
		24 55.1150	Stryk	SB	Inför	Nord
			Delete	Starb.	Insert	North



(LV/TV/FTA, Helsinki/Helsingfors 2011)

*542.

17

A/622/622_2

Suomi. Porvoo. Emäsalo. Kuggsundin sillan alikulkukorkeus. Karttamerkinän korjaus.

Finland. Borgå. Emsalö. Den segelfria höjden under Kuggsunds bro. Korrigerad kartmarkering.

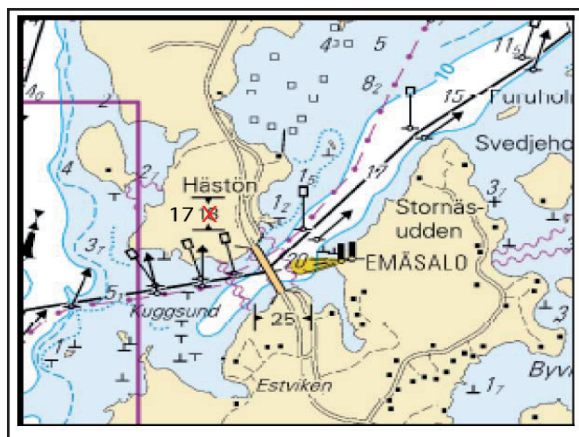
Finland. Porvoo. Emäsalo. Vertical clearance under Kuggsund Bridge. Chart correction.

Kuggsundin sillan alikulkukorkeus on 17 m.

Den segelfria höjden under Kuggsunds bro är 17 m.

The vertical clearance under Kuggsund Bridge is 17 m.

INT 1 D 20			WGS 84	
Alikulkukorkeus	Lisää			
Segelfri höjd	Inför	17 m	60°18.63'N	25°35.26'E
Vertical clearance	Insert			
	Poista			
	Stryk	18 m		
	Delete			



(LV/TV/FTA, Helsinki/Helsingfors 2011)

Suomi. Hamina. Pikku Musta–Vaskosaari venereitti (2.0 m). Siirretyt viitat. Karttamerkinnän muutos.

Finland. Fredrikshamn. Båtrutten Pikku Musta–Vaskosaari (2.0 m). Flyttade prickar. Ändrad kartmarkering.

Finland. Hamina. Pikku Musta-Vaskosaari small craft route (2.0 m). Spar buoys moved. Amend chart.

I. Siirretyt valaisemattomat viitat – Flyttade obelysta prickar – Unlighted spar buoys moved

Siirrä – Flytta – Move:

Nr		WGS 84	
2383	Etelä	Paikasta/Från/From	Paikkaan/Till/To
	Syd	60°30.0561'N	60°30.0469'N
	South	27°14.3430'E	27°14.4404'E

II. Viittojen tarkistettu sijainti – Prickarnas position kontrollerad – Adjusted spar buoy positions

	Nr		WGS 84	
1)	2379	Pohj.-Nord-North	60°30.3209'N	27°13.0031'E
2)	2667	Etelä-Syd-South	60 30.2528	27 13.4690
3)	2727	Pohj.-Nord-North	60 30.1447	27 13.8499
4)	2381	Etelä-Syd-South	60 30.1594	27 13.8734
5)	34780	Pohj.-Nord-North	60 30.1076	27 14.0645

IV Itämeri – Östersjön – Baltic Sea

544.(T)

953

SWE 5, 535, 6, 61, 611, 613, 6144, 615, 616,
6162, 6163, 617, 6172, 619, 62, 621, 622, 623, 624, 7, 71, 711, 712, 713,
714, 731, 74, 8, 821, 822, 839, 921

Ruotsi. Suomi. Viro. Latvia. Liettua. Puola. Saksa. Tanska. Keskinen Itämeri. SAMBAH-projekti. Tutkimuslaitteita meren pohjassa. Poijut.

Sverige. Finland. Estland. Lettland. Litauen. Polen. Tyskland. Danmark. Mel-lersta Östersjön. SAMBAH-projektet. Utrustning på havsbotten. Bojar.

Sweden. Finland. Estonia. Latvia. Lithuania. Poland. Germany. Denmark. Central Baltic. The SAMBAH Project. Equipment on the seabed. Buoy.

TM/UfS/NtM 26/534/2011(T) kumotaan/utgåar/cancelled

Ajankohta: kevät 2011 – kevät 2013

Tidpunkt: våren 2011 - våren 2013

Time: spring 2011 - spring 1013

Yllä mainittuna aikana on käynnissä laaja projekti jonka avulla lasketaan pyöriäisten määrä Itämeressä.

Tutkimuksia varten merenpohjalle Ahvenanmeren ja Öresundin välille on sijoitettu noin 300 akustista tunnistinta (ks. kartta). Ruotsin aluevesille on sijoitettu 99 tunnistinta, joista useimmat on merkitty keltaisella, huippumerkillä, tutkaheijastimella ja heijastimilla varustetulla erikoisviitalla. Laivaväylien pohjalle sijoitettuja tunnistimia ei sen sijaan ole merkitty viitoilla.

TM-lehdessä 26/534 (T) 20.9.2011 julkaistuun Ruotsin aluevesille laskettujen 99 tunnistimen luetteloon on tullut muutos. Kahta Hanöbuktenissa sijaitsevaa tunnistinta

No 1012 ja No 1018 on muutettu siten, että ne nyt on merkitty erikoisviitalla. Tunnistin No 1012 on lisäksi siirretty n. 1 M pohjoisen suuntaan alla mainittuun sijaintiin.

Alla päivitetty luettelo SAMBAH-laitteista Ruotsin aluevesillä.

Under angiven tid pågår ett omfattande projekt för att beräkna mängden tumlare i Östersjön.

Undersökningen görs genom att ca 300 akustiska detektorer placerats på havsbotten i området mellan Ålands hav och Öresund, se kartan.

I svenska farvatten har 99 detektorer utplacerats varav de flesta är utmärkta med en gul SPECIAL-prick med topptecken, radarreflektor och reflexer. De detektorer som ligger på botten inom fartygsstråk har emellertid ingen ytmarkering.

I Ufs 26:534 (T), utgiven 20.9.2011 i Finland (och i Ufs 2011:351/7126(T), utgiven 27.4.2011 i Sverige) publicerades en förteckning över de 99 detektorer som finns inom svenskt ansvarsområde. Två av de detektorer som finns i Hanöbukten, No 1012 och 1018, har sedan dess ändrats så att de nu är utmärkta med SPECIAL-prick. No 1012 har dessutom flyttats ca 1 M nordvärt till den nedan angivna positionen.

Här nedan redovisas en uppdaterad förteckning över den SAMBAH-utrustning som finns inom svenskt ansvarsområde:

Approx. 300 acoustic detectors have been deployed on the seabed within waters between Sea of Åland and the Sound. The purpose is to calculate the number of porpoises in the Baltic Sea.

99 of the detectors have been established within Swedish waters and most of them are marked by a yellow spar buoy with topmark, radar reflector and reflex. Detectors in shipping lanes are however not marked by spar buoys.

A list of the 99 detectors in Swedish waters was published in NtM 26:534(T), published on 20 September 2011 in Finland (and in NtM 2011:351/7126(T), published 27 April 2011 in Sweden). Since then two of the unmarked detectors in Hanöbukten, No 1012 and 1018, have been marked by spar-buoys. Besides, No 1012 has been moved approx. 1 M north of the below stated position.

Below is an updated list of detectors in Swedish waters:

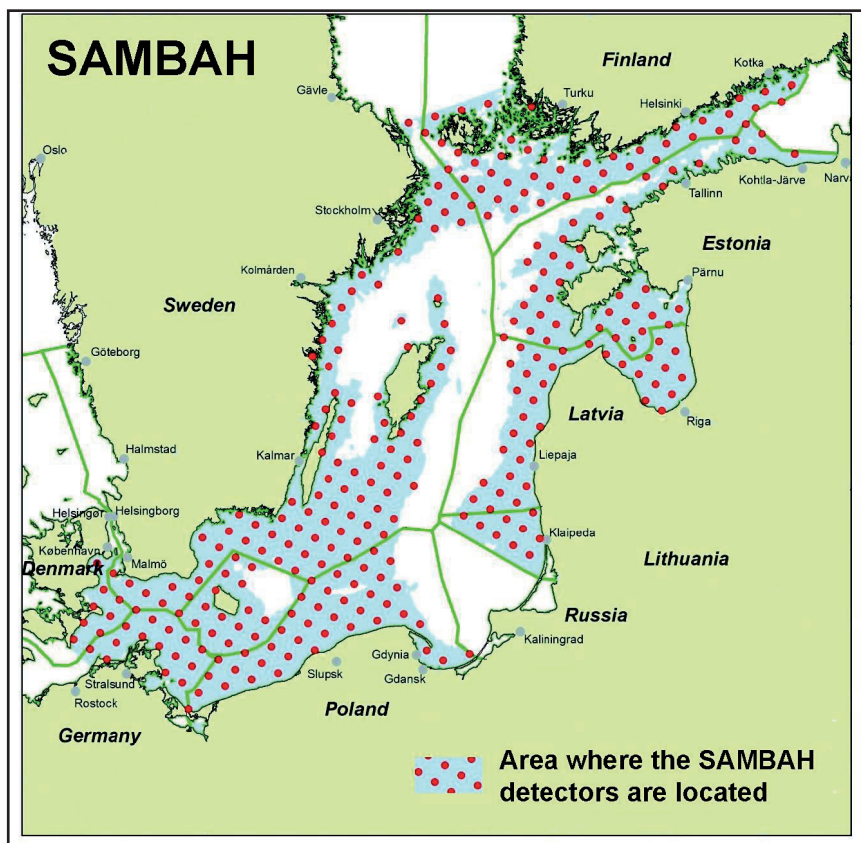
Inför	SPECIAL-prick	1.	55-01,00N	13-12,47E	No 1001, V om Falsterbo
	SPECIAL-prick	2.	55-24,35N	12-44,31E	No 1002
	SPECIAL-prick	3.	55-18,24N	13-03,82E	No 1003
	SPECIAL-prick	4.	55-12,08N	13-23,24E	No 1004
	SPECIAL-prick	5.	55-05,87N	13-42,56E	No 1005 KORRIGERAD POSITION
	Utrustning på botten	6.	55-08,26N	13-57,65E	No 1006
	SPECIAL-prick	7.	55-16,91N	13-53,49E	No 1007, S om Ystad
	SPECIAL-prick	8.	55-19,28N	14-08,66E	No 1008
	SPECIAL-prick	9.	55-21,62N	14-23,86E	No 1009
	SPECIAL-prick	10.	55-32,60N	14-35,06E	No 1010, O om Simrishamn
	SPECIAL-prick	11.	55-49,94N	14-26,89E	No 1011
	SPECIAL-prick	12.	55-43,57N	14-43,14E	No 1012 - NY POSITION, NU MARKERAD MED PRICK
	SPECIAL-prick	13.	55-54,51N	14-57,76E	No 1013, SO om Hanö
	SPECIAL-prick	14.	55-48,84N	15-13,19E	No 1014

	Utrustning på botten	15.	55-41,53N	15-36,49E	No 1015
	SPECIAL-prick	16.	55-28,36N	16-14,79E	No 1016
	Utrustning på botten	17.	55-43,69N	15-51,92E	No 1017
	SPECIAL-prick	18.	56-05,43N	15-09,27E	No 1018, - NU MARKERAD MED PRICK

	SPECIAL-prick	19.	55-58,94N	15-28,75E	No 1019
	SPECIAL-prick	20.	55-52,40N	15-48,12E	No 1020, SO om Utklippan
	Utrustning på botten	21.	55-45,81N	16-07,38E	No 1021
	SPECIAL-prick	22.	55-32,47N	16-45,57E	No 1022
	Utrustning på botten	23.	55-47,90N	16-22,86E	No 1023
	SPECIAL-prick	24.	56-03,25N	15-59,86E	No 1024, NO om Utlången
	Utrustning på botten	25.	55-58,64N	16-19,00E	No 1025
	SPECIAL-prick	26.	55-49,95N	16-38,38E	No 1026
	SPECIAL-prick	27.	55-43,23N	16-57,47E	No 1027
	SPECIAL-prick	28.	55-36,46N	17-16,46E	No 1028
	Utrustning på botten	29.	55-51,98N	16-53,92E	No 1029
	SPECIAL-prick	30.	56-14,08N	16-11,70E	No 1030, O om Kristianopel
	SPECIAL-prick	31.	56-07,43N	16-31,08E	No 1031, SO om Öland S Udde
	SPECIAL-prick	32.	56-00,72N	16-50,34E	No 1032
	SPECIAL-prick	33.	55-47,16N	17-28,52E	No 1033
	SPECIAL-prick	34.	56-18,21N	16-43,09E	No 1034
	SPECIAL-prick	35.	56-11,47N	17-02,41E	No 1035
	SPECIAL-prick	36.	56-04,68N	17-21,61E	No 1036
	Utrustning på botten	37.	55-57,85N	17-40,69E	No 1037
	SPECIAL-prick	38.	55-50,96N	17-59,67E	No 1038
	SPECIAL-prick	39.	56-28,96N	16-55,22E	No 1039
	SPECIAL-prick	40.	56-22,20N	17-14,59E	No 1040
	SPECIAL-prick	41.	56-15,38N	17-33,84E	No 1041
	SPECIAL-prick	42.	56-08,51N	17-52,98E	No 1042
	SPECIAL-prick	43.	56-01,60N	18-12,01E	No 1043
	SPECIAL-prick	44.	56-53,15N	16-28,27E	No 1044, SO om Pataholm
	SPECIAL-prick	45.	56-46,45N	16-47,92E	No 1045
	SPECIAL-prick	46.	56-39,70N	17-07,46E	No 1046
	SPECIAL-prick	47.	56-32,90N	17-26,89E	No 1047
	SPECIAL-prick	48.	56-26,05N	17-46,19E	No 1048
	SPECIAL-prick	49.	56-19,15N	18-05,38E	No 1049
	Utrustning på botten	50.	56-12,21N	18-24,45E	No 1050
	SPECIAL-prick	51.	57-03,93N	16-40,52E	No 1051, NV om Dämman
	SPECIAL-prick	52.	56-57,20N	17-00,23E	No 1052, O om Kårehamn
	SPECIAL-prick	53.	56-43,59N	17-39,30E	No 1053
	Utrustning på botten	54.	56-36,71N	17-58,66E	No 1054

	SPECIAL-prick	55.	56-29,77N	18-17,90E	No 1055
	SPECIAL-prick	56.	56-31,58N	18-33,79E	No 1056
	Utrustning på botten	57.	57-14,69N	16-52,88E	No 1057, O om Blå Jungfrun
	SPECIAL-prick	58.	57-07,93N	17-12,66E	No 1058
	SPECIAL-prick	59.	56-54,25N	17-51,83E	No 1059
	SPECIAL-prick	60.	56-47,42N	18-11,19E	No 1060, S om Hoburg, Gotland
	SPECIAL-prick	61.	56-40,37N	18-30,53E	No 1061
	SPECIAL-prick	62.	57-25,43N	17-05,37E	No 1062, N om Ölands N Udde
	SPECIAL-prick	63.	57-18,64N	17-25,20E	No 1063
	SPECIAL-prick	64.	57-04,89N	18-04,49E	No 1064
	SPECIAL-prick	65.	56-57,94N	18-23,95E	No 1065
	SPECIAL-prick	66.	56-50,95N	18-43,28E	No 1066
	SPECIAL-prick	67.	57-49,65N	16-37,84E	No 1067, N om Västervik
	Utrustning på botten	68.	57-42,93N	16-57,98E	No 1068, NO om Kungsgrundet
	SPECIAL-prick	69.	57-22,44N	17-57,63E	No 1069, N om St Karlsö
	SPECIAL-prick	70.	57-08,53N	18-36,77E	No 1070
	Utrustning på botten	71.	57-53,66N	17-10,66E	No 1071
	SPECIAL-prick	72.	57-19,09N	18-49,72E	No 1072
	SPECIAL-prick	73.	58-11,16N	17-03,21E	No 1073, NO om Häradsjär
	Utrustning på botten	74.	58-04,37N	17-23,46E	No 1074
	SPECIAL-prick	75.	57-29,63N	19-02,80E	No 1075
	SPECIAL-prick	76.	58-21,88N	17-16,08E	No 1076, SO om N Fällbådan
	SPECIAL-prick	77.	57-54,26N	18-36,55E	No 1077
	SPECIAL-prick	78.	57-40,14N	19-16,00E	No 1078, O om Gotland
	SPECIAL-prick	79.	58-32,58N	17-29,09E	No 1079
	Utrustning på botten	80.	58-11,83N	18-29,80E	No 1080
	SPECIAL-prick	81.	57-50,63N	19-29,33E	No 1081, O om Fårö
	SPECIAL-prick	82.	58-43,25N	17-42,23E	No 1082, V om Landsort
	Utrustning på botten	83.	58-08,25N	19-23,03E	No 1083, N om Fårö
	SPECIAL-prick	84.	58-25,86N	19-16,64E	No 1084, N om Gotska Sandön
	SPECIAL-prick	85.	59-04,52N	18-08,91E	No 1085
	SPECIAL-prick	86.	58-57,56N	18-29,46E	No 1086
	Utrustning på botten	87.	58-43,46N	19-10,14E	No 1087
	SPECIAL-prick	88.	59-08,12N	18-43,07E	No 1088
	SPECIAL-prick	89.	58-39,59N	20-04,08E	No 1089

	Utrustning på botten	90.	59-18,66N	18-56,82E	No 1090, N om Sandhamn
	SPECIAL-prick	91.	59-11,57N	19-17,34E	No 1091, NO om Almagrundet
	Utrustning på botten	92.	59-04,42N	19-37,71E	No 1092
	SPECIAL-prick	93.	59-29,18N	19-10,71E	No 1093
	SPECIAL-prick	94.	59-22,05N	19-31,29E	No 1094, S om Svenska Högarna
	Utrustning på botten	95.	59-14,86N	19-51,71E	No 1095
	SPECIAL-prick	96.	59-39,66N	19-24,75E	No 1096
	SPECIAL-prick	97.	59-32,50N	19-45,38E	No 1097, V om Svenska Björn
	Utrustning på botten	98.	59-25,28N	20-05,86E	No 1098
	SPECIAL-prick	99.	60-21,97N	18-50,16E	No 1099, N om Understen



(Ufs 370/7384 (T), Norrköping 2011)

VI Sisävesistöt – Inlandsfarvattnen – Inland Waterways

*545.

V/262



Vuoksen vesistö. Saariston väylä (1.8 m). Syvyystietojen muutokset. Matalikot. Karttamerkinnän muutos.

Vuoksens vattendrag. Saaristoleden (1.8 m). Ändrad djupinformation. Grund. Ändrad kartmarkering.

Vuoksi watercourse. Saaristo channel (1.8 m). Amended depth information. Shoals. Amend chart.

TM/UfS/NtM 18/388/2011 (T) kumotaan/utgåar/cancelled

Syvyystietojen muutokset – Ändrad djupinformation – Amended depth information

			WGS 84	
1)	Poista	 <i>Obstn</i>	62°26.3972'N	29°38.2898'E
	Stryk			
	Delete			
2)	Poista	 <i>Obstn</i>	62 26.3966	29 38.4373
	Stryk			
	Delete			

(LV/TV/FTA, Lappeenranta/Villmanstrand 2011)

*546.

J/317

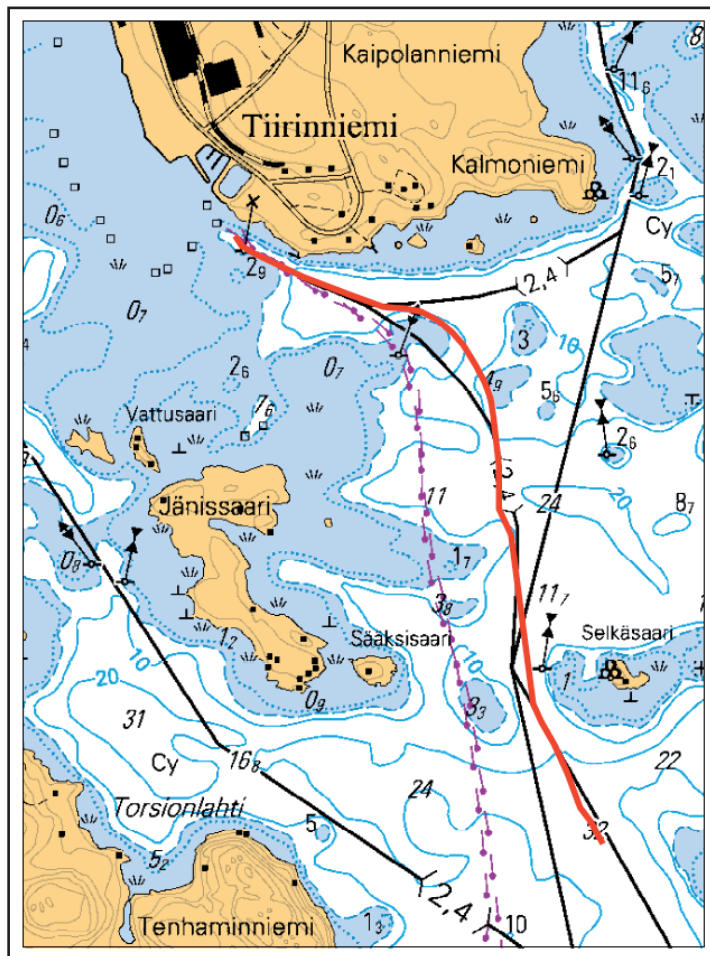
Suomi. Kymijoen vesistö. Päijänne. Jämsä. Kaipola. Laskettu vesijohto. Vesijoh-to alittaa Edesniemi–Kaipola väylän (2.4 m) ja Souselkä–Lehtiselkä–Jämsänjo-ensuu väylän (2.4 m). Karttamerkintä.

Finland. Kymmene älvs vattendrag. Päijänne. Jämsä. Kaipola. Vattenledning utlagd. Ledningen går under farleden Edesniemi –Kaipola (2.4 m) och farleden Souselkä–Lehtiselkä–Jämsänjoensuu (2.4 m). Kartmarkering.

Finland. Kymijoki watercourse. Päijänne. Jämsä. Kaipola. Water pipeline laid. The water pipeline passes under the Edesniemi–Kaipola channel (2.4 m) and Souselkä–Lehtiselkä–Jämsänjoensuu channel (2.4 m). Insert in chart.

Lisää vesijohto – Inför vattenledning – Insert water pipeline:

	WGS 84		
1)	61°48.2560'N	25°14.5010'E	Tiirinniemi
2)	61 48.2260	25 14.5680	
3)	61 48.1320	25 15.0480	
4)	61 48.1240	25 15.1840	
5)	61 48.0880	25 15.3000	
6)	61 47.9720	25 15.4420	
7)	61 47.8520	25 15.4730	
8)	61 47.7800	25 15.4720	
9)	61 47.7340	25 15.5170	
10)	61 47.4380	25 15.5990	
11)	61 47.1940	25 15.8560	



(LV/TV/FTA, Lappeenranta/Villmanstrand 2011)

*547.

447

Kymijoen vesistö. Konnevesi. Kiesimän kanava. Loistotiedot. Karttamerkinnän muutos.

Kymmene älvs vattendrag. Konnevesi. Kiesimä kanal. Fyrkaraktärer. Ändrad kartmarkering.

Kymijoki watercourse. Konnevesi. Kiesimä canal. Light characters. Amend chart.

Sektoriloistojen Kiesimä läntinen ja Kiesimä itäinen loistotiedot ovat kartalla 447 (2005 II) merkitty virheellisesti. Alla korjatut loistotiedot:

Fyrkaraktären för sektorfyarna Kiesimä läntinen och Kiesimä itäinen har angivits fel i kortet 447 (2005 II). Rätt fyrkaraktär anges nedan:

The light characters of sector lights Kiesimä läntinen and Kiesimä itäinen are incorrect in chart 447 (2005 II). Corrected light characters below:

	Nr	Nimi/Namn/Name	KKJ		
				(26°30.65)	
1)	28419	Kiesimä länt.	62°46.15'N	01°33.37'E	NPv(2)3s
				(26°31.18)	
2)	28420	Kiesimä it.	62 46.16	01°34.00 'E	NPv(2)3s

(Pituusaste Helsingistä, ero 24°57.28')
(Kansallinen koordinaattijärjestelmä KKJ)

(Longitud från Helsingfors, differens 24°57.28')
(Det nationella kartverkskoordinatsystemet KKJ)

(Longitude from Helsinki, difference 24°57.28')
(The national coordinate system KKJ)

	Nr	Nimi/Namn/Name	WGS 84		
1)	28419	Kiesimä länt.	62°46.1712'N	26°30.4521'E	VQ(2)3s
2)	28420	Kiesimä it.	62 46.1811	26 30.9825	VQ(2)3s

(LV/TV/FTA, Helsinki/Helsingfors 2011)

VIII Tiedotuksia – Tillkännagivanden – Announcements

***548.(T)**

Suomi. Suomenlahti. Nord Stream–kaasuputkien työt.

Finland. Finska viken. Nord Streams rörlägningsarbeten.

Finland. Gulf of Finland. Nord Stream's pipelaying operations.

Ajankohta: lokakuu 2011

Tidpunkt: oktober 2011

Time: October 2011

TM/UfS/NtM 24/501/2011(T) kumotaan/utgår/cancelled

1. Nord Stream jatkaa putkilinja 1. käyttöönnoton valmistelua. Toimenpiteistä tiedotetaan.

2. Sandpiper jatkaa kiviaineksen läjitystä Ruotsin ja Venäjän aluevesillä. Venäjän aluevesille kiviainesta kuljetetaan Kotkasta.

Meriliikenteen tulee sivuuttaa alus vähintään 2000 m etäisyydeltä.

1. Nord Streams förberedelser för att ta i bruk gasledning 1 fortgår. Information om åtgärderna utgår separat.

2. Sandpiper fortsätter att tippa stenmaterial inom de svenska och ryska territorialvattnen. Till de ryska territorialvattnen transporteras stenmaterial från Kotka.

Minsta passageavstånd för annan sjötrafik är 2000 m.

1. Nord Stream intends to commence operation of Pipeline 1. This activity will be subject to a separate notification.

2. Sandpiper will continue rock placement in Sweden and Russia. Rock will be loaded in Kotka for the Russian sector.

Vessels are requested to pass the work vessel at a minimum distance of 2000 m.

Alukset kuuntelevat VHF-kanavaa 16 ja Suomenlahdella pakollisia GOFREP VHF-kanavia.

Fartygen lyssnar på VHF-kanal 16 och i Finska viken på de obligatoriska GOFREP VHF-kanalerna.

The vessels monitor VHF channel 16 and in the Gulf of Finland the compulsory GOFREP VHF channels.

549. Voimassa olevat ennakkotiedonannot (P)- ja tilapäiset tiedonannot (T) 30.9.2011

Preliminära (P) och Tillfälliga (T) notiser 30.9.2011

Current Preliminary (P) and temporary (T) notices 30.9.2011

TM - UFS - NtM	Ajankohta Tidpunkt Time	Merikartta Sjökart Chart	Asia - Rubrik - Subject
Suomenlahti - Finska viken - Gulf of Finland			
25/509/2011(T)	Until 7.10.2011	18	Helsinki. Anchoring of research equipment. Temporary ODAS-buoys.
24/489/2011(T)	Until 30.10.2011	13, 14	Hamina. Tammionseikä. Three temporary special marks.
24/482/2011(T)	29.8 - 31.10.2011	22	Hanko Western Harbour. Dredging and quarrying operations
22-23/453/2011(T)	Until end of 10.2011	17	SE of Helsinki. Temporary ODAS buoy established.
20-21/421/2011(T)	Until end of 2011	18	Helsinki. Dredging and quarrying operation.
19/402/2011(T)	Until further notice	15, 16	Loviisa. Amended maximum authorised draught.
18/375/2011(T)	Until 31.10.2011	18	Temporary ODAS-buoy laid.
15/299/2011(T)	Until further notice	18	Helsinki. Wreck site of the Kronprins Gustav Adolf. Temporary special marks and mooring buoys.
2/25/2011(T)	Until further notice	18	Helsinki. West Harbour. Sampo quay. Filling works.
30/473/2010(T)	Until further notice	15	Orregrund-Kotka chan.(10m). Lättäta sector light. Malfunctioning aid to navigation.
9-10/116/2010(T)	Until further notice	15, 16	Loviisa. Max. authorised draught reduced.
6-7/74/2010(T)	Until further notice	18	Helsinki. W Harb. Max. auth. draught reduced.

24/439/2009(T)	Until further notice	21	Tammisaari. Pohjankuru channel (4.9 m). Pohja bridges. Depth observations.
23/419/2009(T)	Until further notice	14	NE of Kirkonmaa. Shoal. Depth observation.
19-20/338/2009(T)	Until further notice	14	Kotka. The fairway to Hietanen (10.0 m). Swept erroneous. Notice partially cancelled.
7-8/111/2009(T)	Until further notice	14, 15	Kotka. Reduction of max. authorised draught. Spar buoys moved.
21/371/2008(T)	Until further notice	14	Kotka. Heinäsaari—Mussalochannel(2.4 m). Spar buoy established.
Saaristomeri - Skärgårdshavet - Archipelago Sea			
24/494/2011(T)	1.9 – 10.12.2011	23	Archipelago Sea. Kemionsaari. Dredging operation.
17/354/2011(T)	13.6.2011-30.10.2011	25, 26,	Västaboland and Naantali. Temporary works of art have been installed in the vicinity of navigational marks.
14/268/2011(T)	18.5.211-31.10.2012	26	Rymättylä. Hämäräsalmi. Anchored measuring devices.
18-19/325/2008(T)	Until further notice	29	Houtskär. Dangerous underw. rock. Warning.
Pohjanlahti - Bottniska viken - Gulf of Bothnia			
18/385/2011(T)	Until autumn 2011	52	Bay of Bothnia. Kokkola channel (13.0 m). Seabed surveys in the channel. Warning.
12/172/2010(T)	Until further notice	958	Approaches to Kemi (10m). Amend. depth information.
6-7/82/2010(T)	Until further notice	59	Ajos. Channell to Kemi (10m). Obstructions. Warning.
23-24/418/2008(T)	Until further notice	58, 59	Off Kemi. Max. author. draught reduced 10m to 9.8m.
20/358/2008(T)	Until further notice	51, 52	NW of Kokkola. Stockö channel (3.0 m) Max. authorised draught reduced to 2.7 m.
13/214/2008(T)	Until further notice	52	Port of Kokkola. Spar buoy established.
4/52/2008(T)	Until further notice	48	Off Vaasa. Shoal. Spar buoy established.

Itämeri - Östersjön - Baltic Sea		
15/314/2011(T)	Until further notice	953 Northern Baltic. ODAS buoy reinstated after the winter season.
Sisävedet - Inlandsfarvattnen - Inland waterways		
12/233/2011(T)	Until further notice	K Sorvasalo-Niinilahti channel (1.8 m). Obstruction.
9/156/2011(T)	Until further notice	L Pulp channel (4.2m). Amended depth information.
25/405/2010(T)	Until further notice	K Channel in Keitele Canal (2.4 m). Shoals.
20-21/319/2010(T)	Until further notice	K Keitele. Suosalmi-Listonsalmi channel (2.4 m). Shoal. Depth observation.
12/174/2010(T)	Until further notice	K Keitele. Ääneinen– Harinkaa channel (1.8 m). Amended depth information.
32/598/2009(T)	Until further notice	415 Pielisjoki channel (2.4 m). Shoal. Depth observation.
30/566/2009(T)	Until further notice	M Matarinsalmi–Peonsalmi ch. (2.4 m). Shoal. Depth inf.
30/565/2009(T)	Until further notice	L Orraintaipale channel (2.4 m). Shoal. Depth observat.
28/528/2009(T)	Until further notice	K Keitele. Kuljonlahti chn.(1.8 m). Underwater rock.
Tiedotuksia - Tillkännagivanden - Announcements		
27/548/2011(T)	October 2011	Gulf of Finland. Nord Stream's pipelaying operations.
19/410/2011(P)	9 5 1 - 953	Alignment of the Nord Stream gas pipeline 2. via the Gulf of Finland to the northern Baltic.
17/365/2011(T)	Until further notice	952 Northern Baltic. ODAS buoys (Occas). Correction.
16/342/2011(T)	Until further notice	952 Northern Baltic. ODAS buoys (Occas)
15/316/2011(T)		Coastal waters and inland waterways in Finland. Springtime checking of floating aids to navigation. Warning.

14/278/2011(T)	<u>Until 31.10.2011</u>	18	Helsinki. Hevossalmi bridge opened for sea traffic.
17/264/2010(T)	By the end of 2011	952, 953	Gulf of Finland. Pipelay operations for Nord Stream
14/218/2010(T)	Until further notice	26	Turku..Aura river. Waterway closed for all traffic at Myllysilta bridge.

(LV/TV/FTA, Helsinki/Helsingfors 2011)

NAVAREA ONE

550. NAVAREA I 250

1. NAVAREA I WARNINGS IN FORCE AT 161000 UTC SEP 11:

2008 SERIES: 341

2010 SERIES: 317

2011 SERIES: 061 087 143 180 182 203 206 214 218 225 226 227 233 242 244
247 248 249 250.

NOTES:

A.TEXTS OF NAVAREA I WARNINGS ARE PRINTED IN WEEKLY EDITIONS OF NOTICE TO MARINERS.

B.NAVAREA I WARNINGS LESS THAN 42 DAYS OLD (206/11 ONWARD) ARE CURRENTLY INCLUDED ON RELEVANT SAFETYNET AND/OR NAVTEX BROADCASTS.

2. CANCEL 241/11(GA19)(EA35)(OA93).

551. NAVAREA I 255

SELF CANCELLING. CANCEL NAVAREA I 225/11, WG TASMAN OPERATIONS COMPLETED.

552. NAVAREA I 257

1.NAVAREA I WARNINGS IN FORCE AT 231000 UTC SEP 11:

2008 SERIES: 341

2010 SERIES: 317

2011 SERIES: 087 143 180 182 203 214 218 226 227 233 242 248 251 256 257.

NOTES:

A.TEXTS OF NAVAREA I WARNINGS ARE PRINTED IN WEEKLY EDITIONS OF NOTICES TO MARINERS.

B.NAVAREA I WARNINGS LESS THAN 42 DAYS OLD (214/11 ONWARD) ARE CURRENTLY INCLUDED ON RELEVANT SAFETYNET AND/OR NAVTEX BROADCASTS.

2.CANCEL 250/11 (GA38)(EA49)(OA03).

553. NAVAREA I 258

THIS IS A RE-TRANSMISSION OF THE FOLLOWING WARNING:

NAVAREA III 395/11 EASTERN MEDITERRANEAN GULF OF SIRTE OOPERATION UNIFIED PROTECTOR (NATO MARITIME EMBARGO)

1. MARITIME EMBARGO

NATO IS COORDINATING A MARITIME EMBARGO OPERATION IN VICINITY OF LIBYA IN ACCORDANCE WITH UNITED NATIONS SECURITY COUNCIL

RESOLUTIONS (UNSCR) 1970, 1973 AND 2009.

2. EMBARGO ENFORCEMENT

THE OPERATIONS ARE BEING CONDUCTED IN SUPPORT OF THE EMBARGO IN THE MARITIME SURVEILLANCE AREA (MSA) ENCLOSED BY THE FOLLOWING POINTS, CLOCKWISE FROM POINT A:

A: 34-00N 012-00E

B: 34-00N 022-00E

C: 33-00N 025-00E, AND THEN DIRECTLY SOUTH TO

D: LIMIT OF LIBYAN TERRITORIAL WATERS AND THEN FOLLOWING LIMIT OF LIBYAN TERRITORIAL WATERS WESTWARDS TO

E: LIMIT OF LIBYAN TERRITORIAL WATERS AT 12-00E, DIRECTLY SOUTH OF POINT A THE MSA IS IDENTICAL TO THAT DEFINED IN THE CANCELLED NAVAREA III 170/11.

3. REPORTING SYSTEM

ALL VESSELS PLANNING TO TRANSIT THROUGH THE MSA ARE REQUIRED TO SEND THE DATA SPECIFIED TO THE NATO SHIPPING CENTRE (UK) AND TO NATO HQ MC NAPLES, 12 HOURS BEFORE ENTERING THE MSA. DATA TO SEND

A: SHIP NAME

B: FLAG

C: IMO NUMBER

D: INMARSAT TELEPHONE NUMBER

E: SHIP'S CURRENT POSITION AND TIME OF SENDING MESSAGE

F: CURRENT COURSE

G: CURRENT SPEED

H: CARGO

I: DESTINATION AND ESTIMATED DATE AND TIME OF ARRIVAL

J: LAST PORT CALLED AT, AND THE DATE AND TIME OF DEPARTURE FROM THAT PORT

4. GENERAL GUIDANCE FOR MARINERS NATO NAVAL UNITS WITHIN THE MSA WILL HAIL AND MAY BOARD VESSELS. WILLINGNESS TO COOPERATE AND QUICK RESPONSE TO HAILING WILL MINIMISE DELAYS TO MERCHANT SHIPPING TRAFFIC. FOR ADDITIONAL INFORMATION, A DEDICATED NATO NAVAL COOPERATION AND GUIDANCE FOR SHIPPING (NCAGS) TEAM CAN BE CONTACTED DIRECTLY BETWEEN THE HOURS OF 0430 UTC AND 1630 UTC AT NATO HQ MC NAPLES. THE NCAGS TEAMS'S ROLE IS TO ENHANCE COORDINATION BETWEEN NATO UNITS ENFORCING THE EMBARGO AND MARINERS TRANSITING THE MSA ALSO, THE NATO HQ MC NAPLES MARITIME OPERATION CENTRE (MOC) CAN BE CONTACTED 24 HOURS A DAY. NATO HQ MC NAPLES RECOMMENDS THAT MERCHANT SHIPPING COMPANIES WITH VESSELS PLANNING TO CALL AT LIBYAN HARBOURS CONTACT THE NCAGS TEAM AT NATO HQ MC NAPLES.

5. CONTACT DETAILS

NATO SHIPPING CENTRE (UK) PHONE: ++44 1923 956574

EMAIL: INFO(AT)SHIPPING.NATO.INT WEBPAGE: [HTTP://WWW.SHIPPING.NATO.INT/NATO](http://www.shipping.nato.int/nato) HQ MC NAPLES

MOC TOLL FREE PHONE: 800 1101 2010

NCAGS: 39 081 721 6184

EMAIL: MOCN3DOGCELL(AT)MANP.NATO.INT

6. CANCEL NAVAREA III 170/11.

7. CANCEL NAVAREA I 087/11

554. NAVAREA I 259

SELF CANCELLING. CANCEL 242/11 (GA21). R/V WESTERN PRIDE OPERATIONS COMPLETE

555. NAVAREA I 260

NORTH SEA. UK SECTOR. CHARTS BA 273 AND 278.

1. SEISMIC SURVEY IN PROGRESS BY M/V RAMFORM VIKING TOWING 12 X 6700 METRE CABLES IN AREA BOUNDED BY 57-31.3N 0001-29.2E, 57-03.2N 001-28.4E, 56-48.7N 000-33.5E AND 57-17.0N 000-33.4E. GUARD VESSELS IN ATTENDANCE. WIDE BERTH REQUESTED.
2. CANCEL THIS MESSAGE 122359 UTC OCT 11.
3. CANCEL 256/11 (GA46)

556. NAVAREA I 261

1. RIGLIST. CORRECT AT 260600 UTC SEP 11

SOUTHERN NORTH SEA: 51 TO 55N.

52-25.8N 003-21.5E	NOBLE LYNDA BOSSLER
52-59.0N 002-18.2E	ENERGY ENHANCER
53-09.4N 003-57.8E	NOBLE GEORGE SAUVAGEAU
53-36.2N 001-45.4E	NOBLE JULIE ROBERTSON
S53-44.5N 003-37.1E	SEAFOX 2
54-02.0N 000-27.8E	ENSCO 92
54-19.0N 002-37.2E	ENSCO 80

NEW

NORTH SEA: 55 TO 60N, EAST OF 5W AND THE BALTIC SEA.

55-24.7N 004-49.6E	ENSCO 70
56-22.9N 004-14.2E	MAERSK GIANT
56-39.0N 002-29.8E	MAERSK RESILIENT
56-54.9N 002-24.0E	ROWAN GORILLA 6
56-56.9N 002-01.9E	GSF GALAXY 2
57-01.0N 002-35.5E	MAERSK GALLANT
57-03.9N 003-02.7E	MAERSK GUARDIAN
57-13.4N 001-53.7E	ENSCO 101
57-36.0N 001-38.6E	ENSCO 100
57-41.4N 001-45.5E	OCEAN NOMAD

57-45.0N 001-04.9E	ROWAN GORILLA 7	
57-50.5N 000-21.4W	TRANSOCEAN PROSPECT	
58-25.2N 000-32.9W	SEDCO 704	
58-25.4N 001-43.4E	WEST EPSILON	
58-46.8N 002-39.2E	BREDFORD DOLPHIN	
58-51.3N 002-32.6E	TRANSOCEAN LEADER	NEW
59-09.8N 001-37.1E	PAUL B LLOYD JNR	
59-31.9N 001-24.4E	GSF ARCTIC 3	
59-54.0N 001-15.4E	WILHUNTER	

NORWEGIAN SEA: 60N TO 65N, EAST OF 5W.

60-17.0N 003-50.3W	WILPHOENIX	
60-32.8N 001-43.0E	SEDCO 714	
60-45.2N 003-26.4E	SONGA TRYM	
60-49.4N 004-08.0W	STENA CARRON	
60-51.5N 003-26.6E	WEST VENTURE	NEW
60-52.6N 000-50.1E	TRANSOCEAN JOHN SHAW	
60-56.8N 003-34.7E	STENA DON	
61-02.0N 001-07.7E	BORGSTEN DOLPHIN	
61-05.9N 002-16.6E	DEEPSEA ATLANTIC	
61-06.6N 002-15.6E	SONGA DEE	
61-15.7N 003-21.5E	BIDEFORD DOLPHIN	
61-18.0N 002-21.8E	OCEAN VANGUARD	
61-20.3N 003-57.4E	TRANSOCEAN SEARCHER	
61-29.8N 001-36.0E	BYFORD DOLPHIN	
61-47.7N 002-43.1E	WEST ALPHA	
64-46.8N 006-59.5E	TRANSOCEAN ARCTIC	

SOUTH AND WEST COASTS OF THE BRITISH ISLES.
 54-20.3N 011-03.4W SEDCO 711

NOTES:

- A. RIGS ARE PROTECTED BY A 500 METRE SAFETY ZONE.
 - B. ACP - ADJACENT TO CHARTED PLATFORM.
 - C. FOR RIGS LOCATED NORTH OF 65N, REFER TO NAVAREA XIX WARNINGS OR VISIT WWW.NAVAREA-XIX.NO.
2. CANCEL 251/11.

